

CERTIFICATE OF LOCATION OF GOVERNMENT CORNER

County of Anoka

State of Minnesota

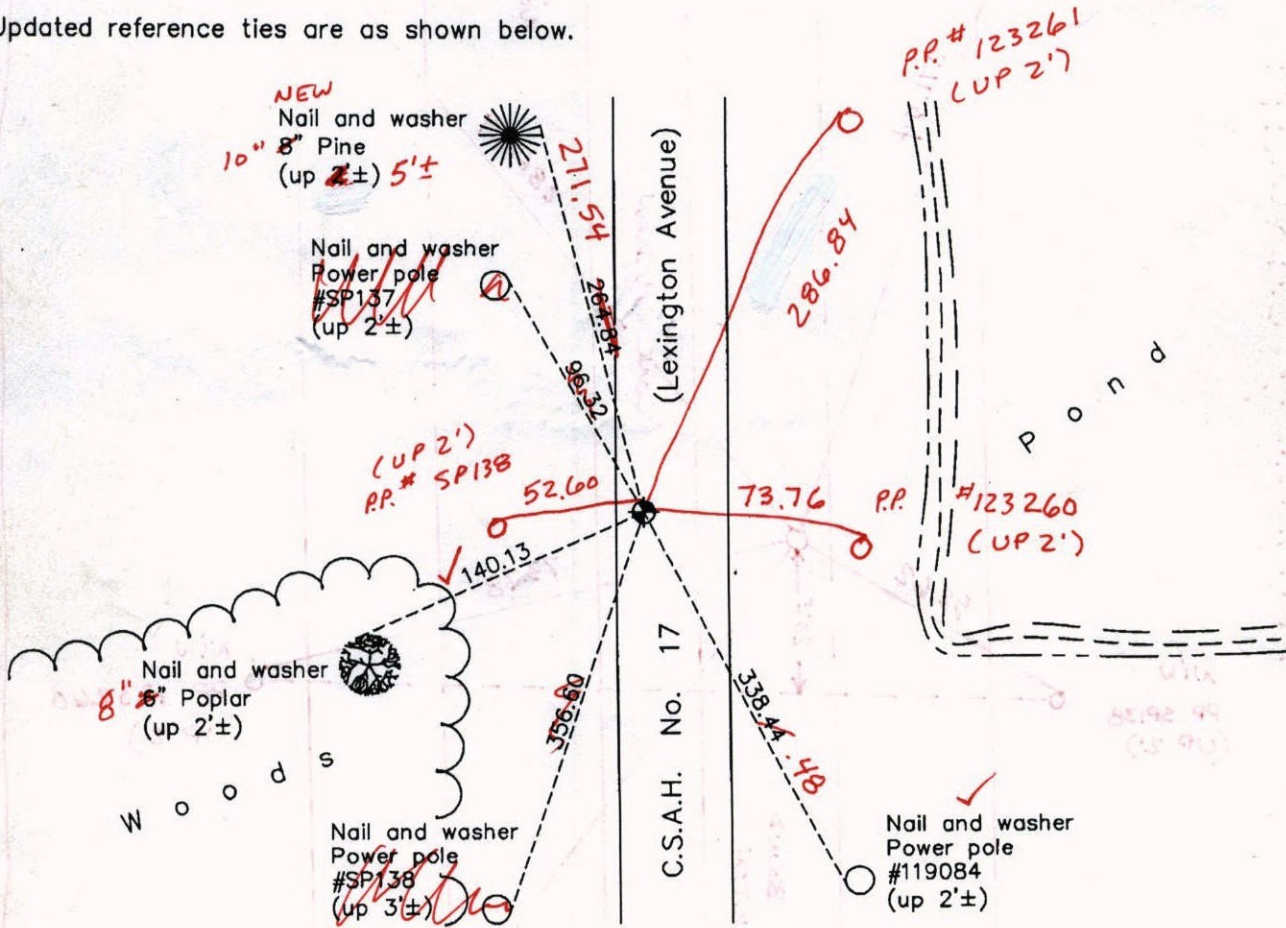
East 1/4 Corner of Sec. 35 Township 32 Range 23

On the 8th day of August, 1969, the described corner was evidenced by area resurvey

and to perpetuate the location of said corner, at the exact location thereof, a permanent marker was placed consisting of a cast iron monument

AND on the 21st day of April, 2011, said permanent marker was found and the ties were updated **REPLACED M.D.N. 10-25-13 AND TIES UPDATED**

Updated reference ties are as shown below.



10-25-13
BK-55
T/S
VRS

N
W ANOKA COUNTY SURVEYOR E
S

Revision Date
10/13/11

N 0.02
W 0.04

N.A.D. 1983 Coordinates
(1996 Adjustment)

County Project Coordinates	
Northing	166798.1632
Easting	526720.0037
Date	12/13/01

I hereby certify that this United States public land survey monument record is correct and complete to the best of my knowledge and belief.

Larry D. Hoium Date 10/13/11
 Larry D. Hoium, Anoka County Surveyor
 Minnesota License Number 18165

VRS 3DQ = 0.05 1956 N = 166798. 19.9807 E = 5267

MON. FALLS 3'± EAST OF E
AND ABOUT 20' N. OF PP'S

PINE ROW (UP 5')
N1W
8" PINE

N1W
PP 123261
(UP 2')

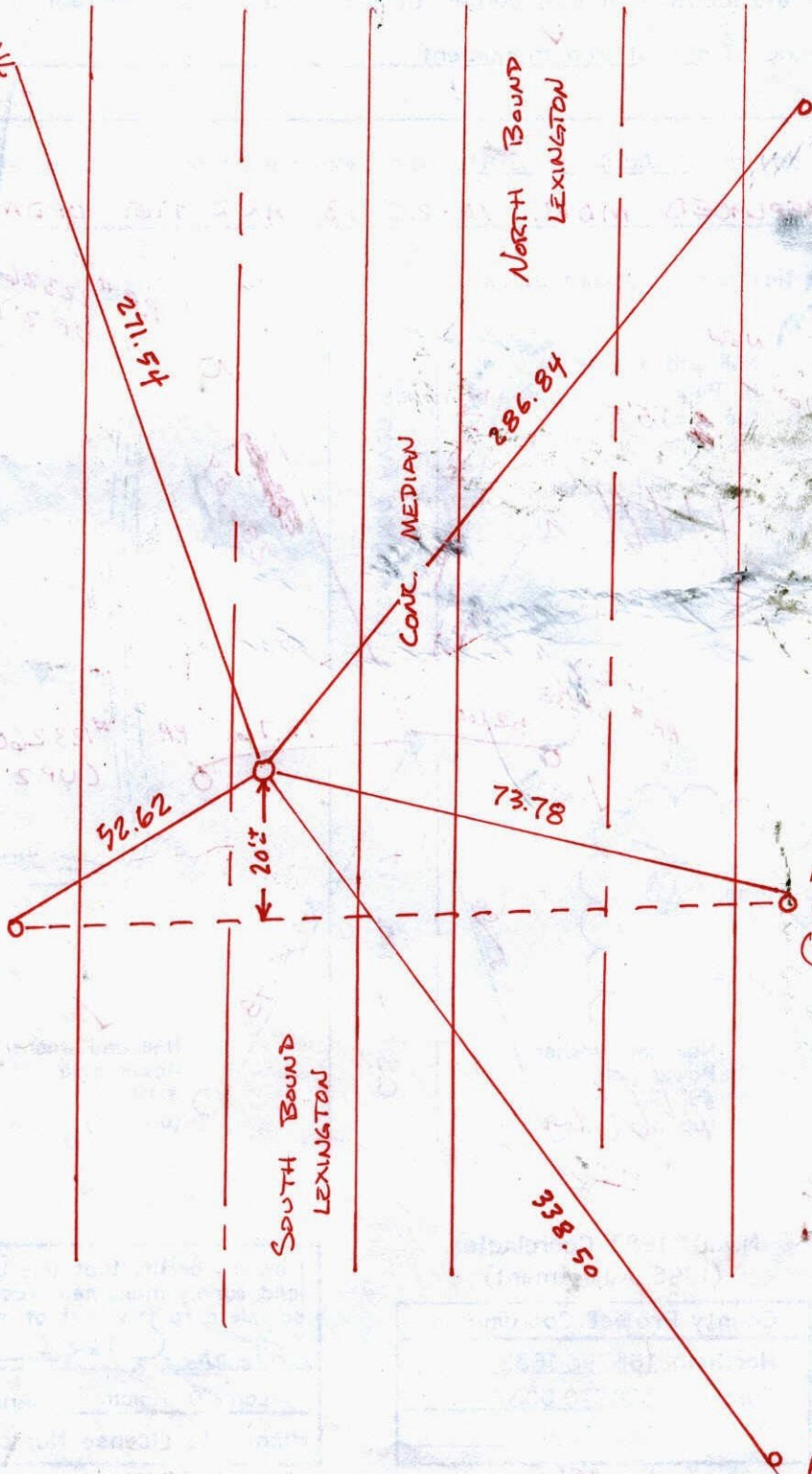
MARSH/BRUSH

POND

N1W
PP SP138
(UP 2')

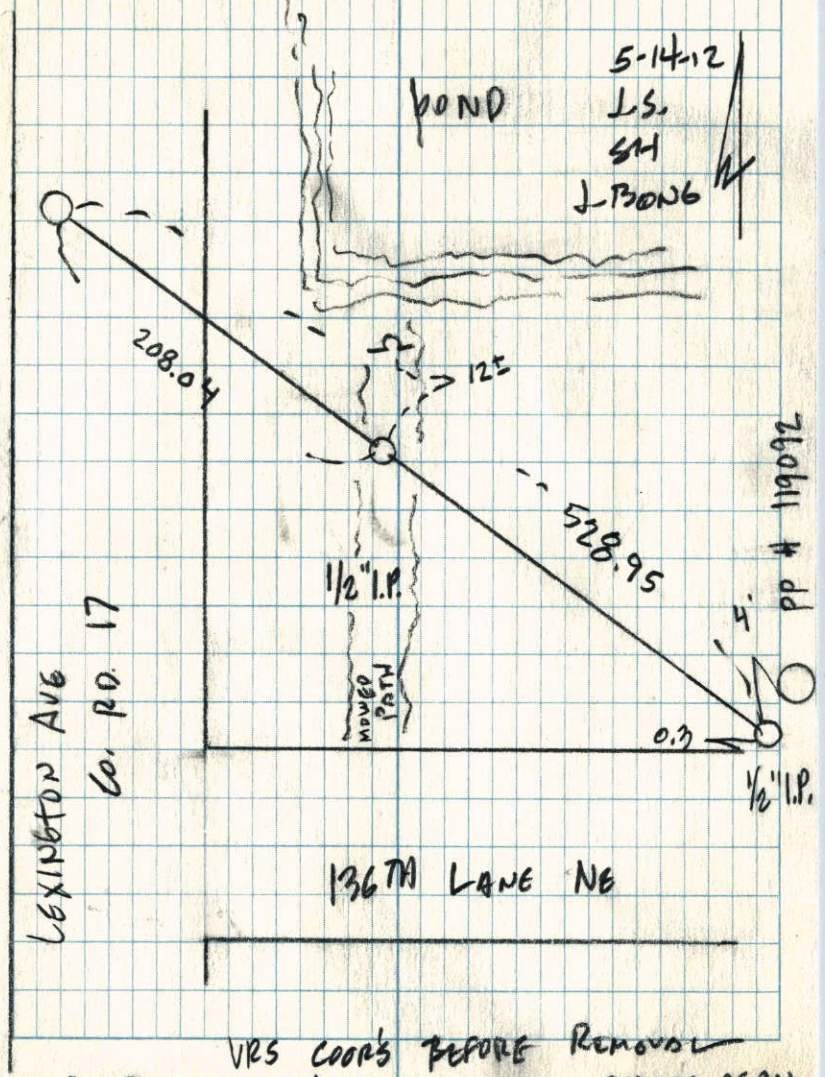
N1W
PP 123260
(UP 2')

N1W
PP 119084
(UP 2')



E 1/4 SEC 35 T 32 R 23

TRANSIT TIE + SHANG TIES
FOR REMOVAL OF CIM FOR CONST.



VRS COOR'S BEFORE Removal
 3D Q = 0.04 N: 166798.1144 E: 526719.9594

CERTIFICATE OF LOCATION OF GOVERNMENT CORNER

County of Anoka

State of Minnesota

East 1/4 Corner of Sec. 35 Township 32 Range 23

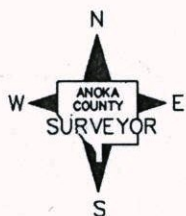
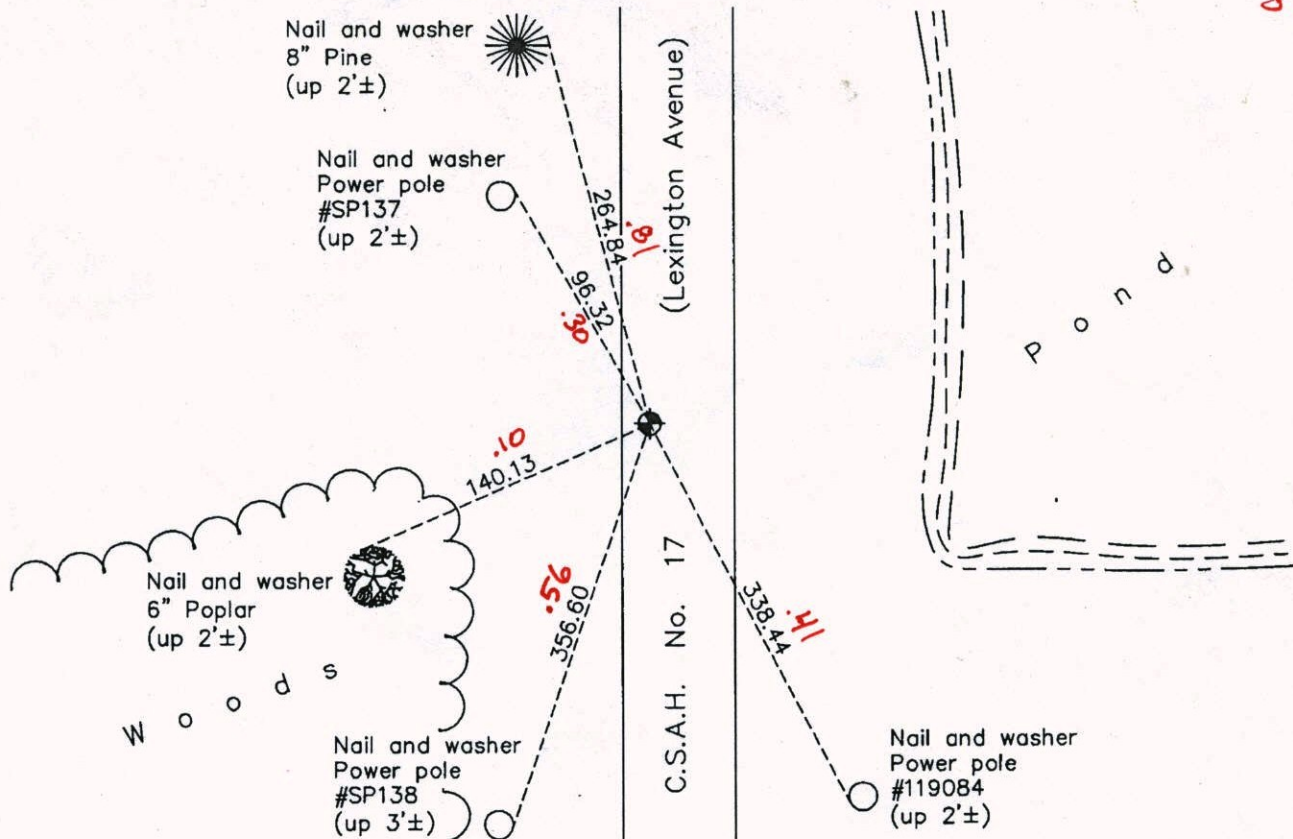
On the 8th day of August, 1969, the described corner was evidenced by area resurvey

and to perpetuate the location of said corner, at the exact location thereof, a permanent marker was placed consisting of a cast iron monument

AND on the 21st day of April, 2011, said permanent marker was found and the ties were updated

Updated reference ties are as shown below.

5-14-12
DS
SH
JR



Revision Date

10/13/11

N.A.D. 1983 Coordinates
(1996 Adjustment)

County Project Coordinates	
Northing	166798.1632
Easting	526720.0037
Date	12/13/01

I hereby certify that this United States public land survey monument record is correct and complete to the best of my knowledge and belief.

Larry D. Hoium Date 10/13/11

Larry D. Hoium, Anoka County Surveyor

Minnesota License Number 18165

VRS COORD'S BEFORE
REMOVAL 30 Q=0.04

N: 166798.1644

E: 526719.9594

CERTIFICATE OF LOCATION OF GOVERNMENT CORNER

County of Anoka

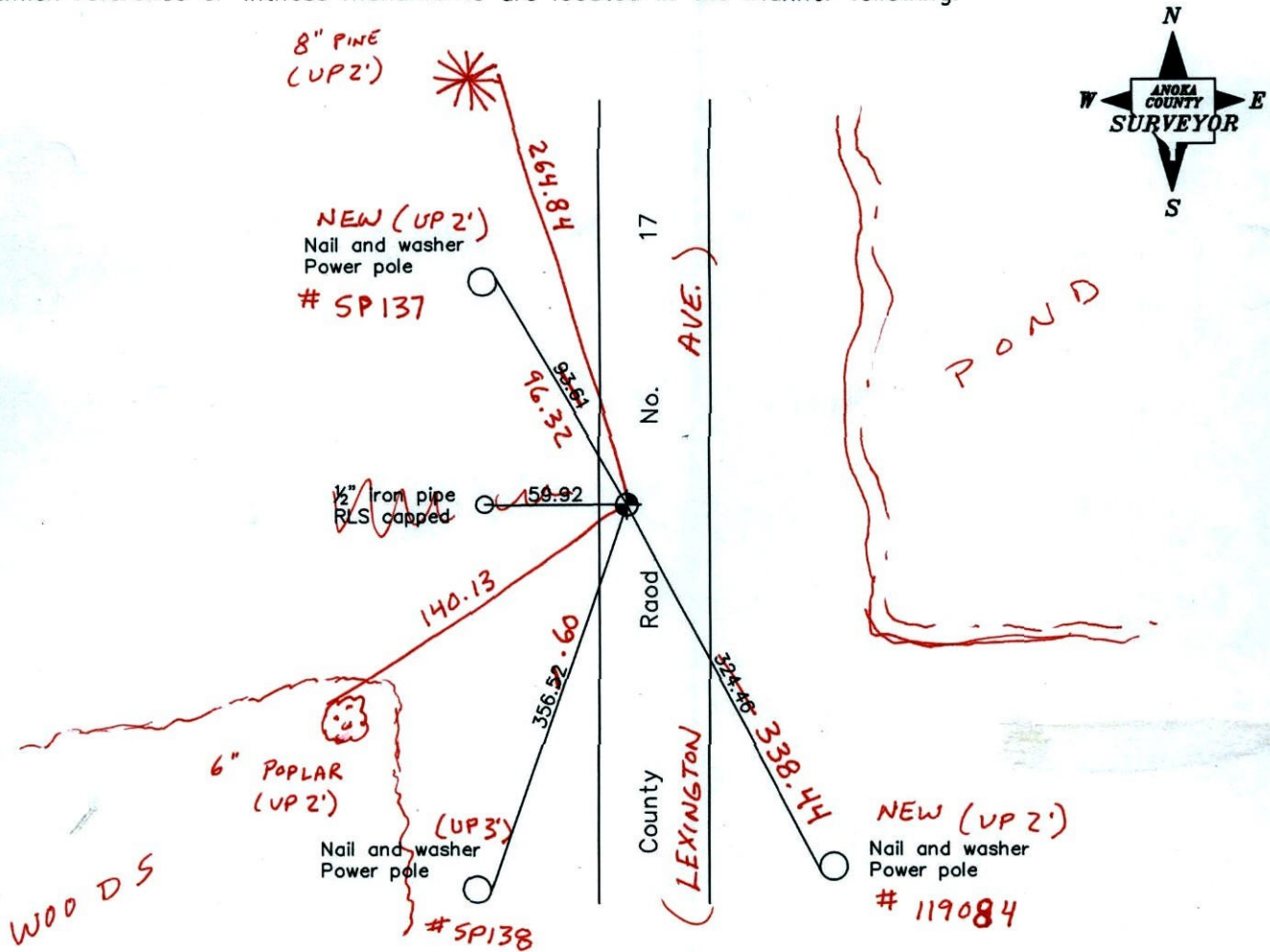
State of Minnesota

East 1/4 Corner of Sec. 35 Township 32 Range 23

I hereby certify that on the 8th day of August, 1969, I found the described corner which was evidenced by area resurvey

and I further certify that to perpetuate the location of said corner, I did, at the exact location thereof, place a permanent marker consisting of a cast iron monument ✓

which reference or witness monuments are located in the manner following:



Revised date

8/16/96
6/01/99
12/13/01
4-21-11

BK-SS
T/T

N.A.D. 1983 Coordinates
(1996 adjustment)

County Project Coordinates	State Plane Coordinates
Northing <u>166798.1632</u>	Y _____
Easting <u>526720.0037</u>	X _____

Date 12/13/01

CERTIFICATE OF LOCATION OF GOVERNMENT CORNER

County of Anoka

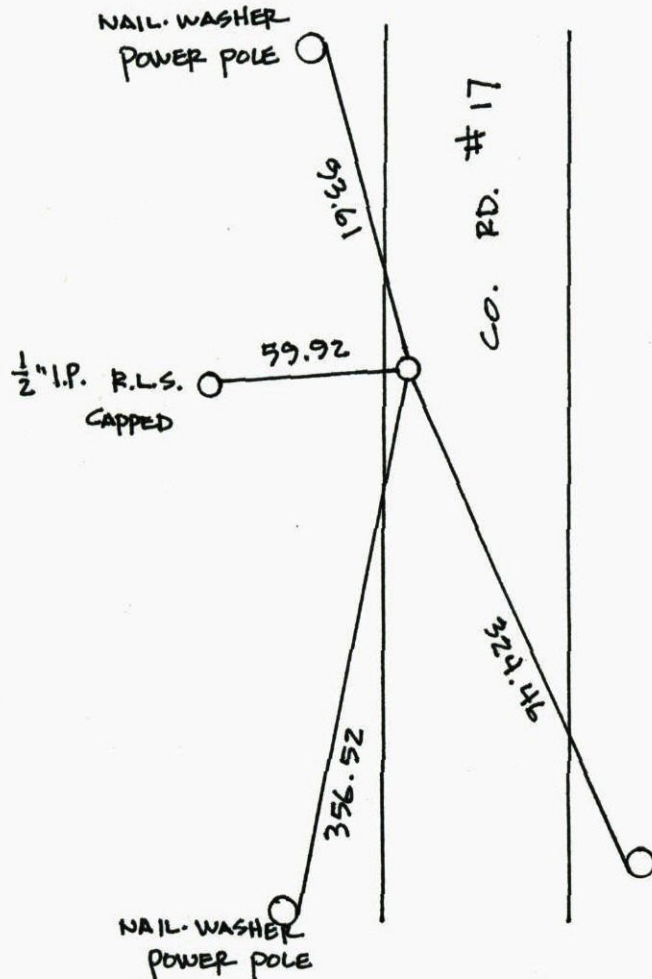
State of Minnesota

EAST QTR. Corner of Sec. 35 Township 32 Range 23

I hereby certify that on the 8TH day of AUGUST, 1969, I found the described corner which was evidenced by RESURVEY

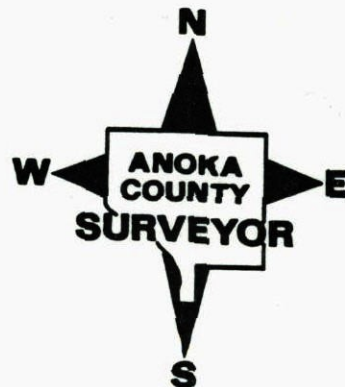
and I further certify that to perpetuate the location of said corner, I did, at the exact location thereof, place a permanent marker consisting of CAST IRON MONUMENT

which reference or witness monuments are located in the manner following:



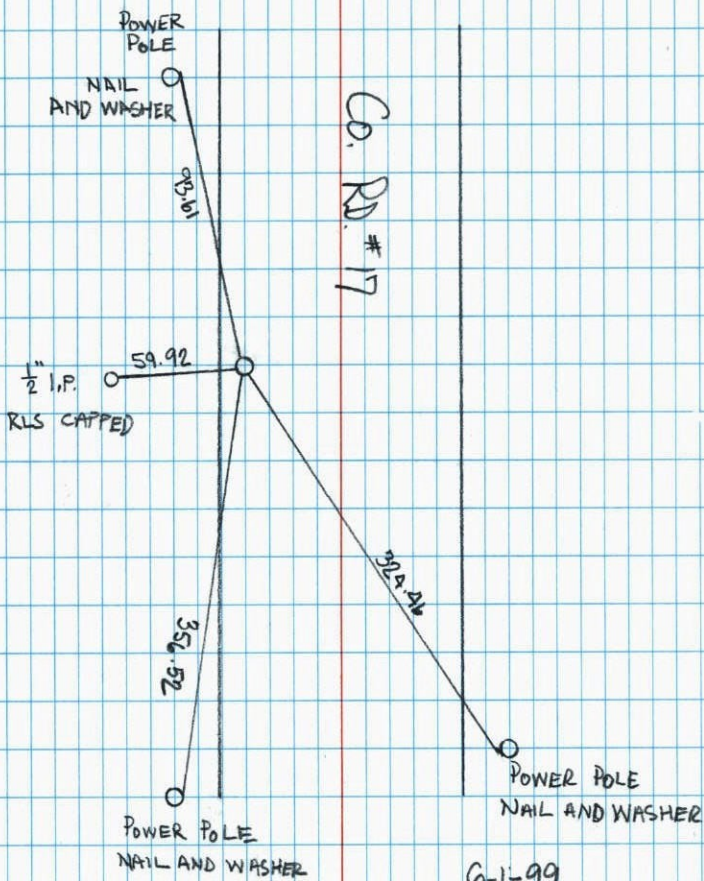
N.A.D.	1983	Co-ordinates
County	Project	Co-ordinates
Northing	<u>166798.1632</u>	
Easting	<u>526720.0037</u>	
State Plane Co-ordinates		
Y	_____	
X	_____	
Date	_____	

Revised date	Revised date	Revised date
<u>6-30-87</u>		
<u>11-26-91</u>		
<u>8-16-96</u>		
<u>6-1-99</u>		
<u>12-13-01</u>		



EAST QTR. COR. 35, T. 32, R. 23

RETIED CAST IRON MON.



6-1-99
 J. SIMMER
 A. NAEVE
 T. SCHWAB

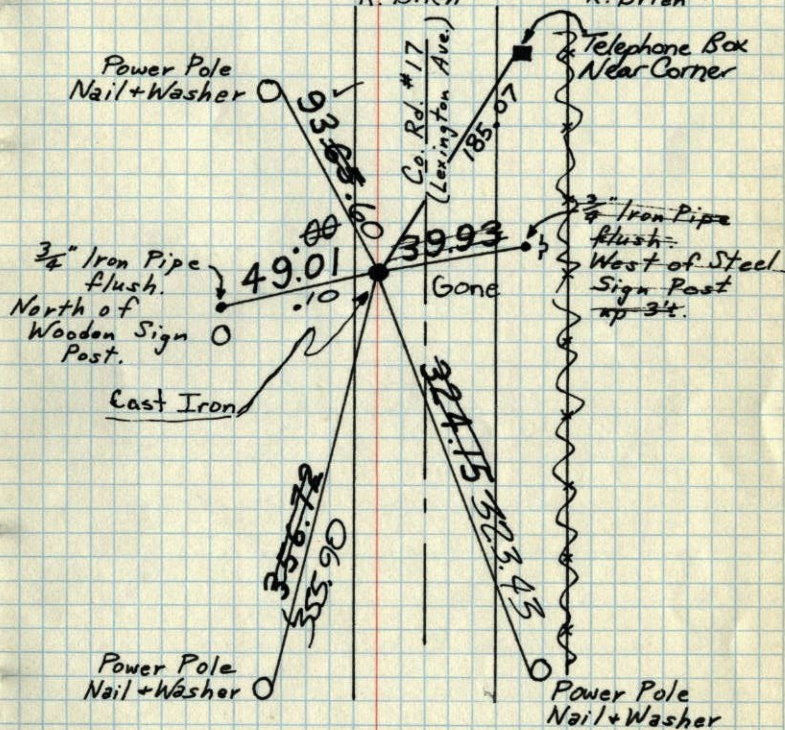
E¹/₄ Cor. Sec. 35-T32-R23

Set Cast Iron Monument flush from
 area resurvey. PK's 2.00' North + East.

Mon. Raised
 June 16, 1972

Tie Check
 May 25, 1971
 M. D. Anderson
 R. Brien

August 8, 1969
 D. Powell
 R. Olson
 R. Brien



Tie Check
 July 18, 1975
 D. Dahl
 B. Sannerud
 G. Adams

Tie Check
 June 21, 1978
 D. Dahl
 B. Stephens
 M. Kishan

TIE CHECK
 June 23, 1984
 D. Ross
 G. Lips
 R. Bennett

TEMPERATURE CORRECTED
 AND HORIZONTALLY
 TAPED MEASUREMENTS

ROLAND W. ANDERSON
 COUNTY SURVEYOR
 ANOKA COUNTY, MINNESOTA

E $\frac{1}{4}$ Cor. Sec. 35-T32-R23

Set C.I. Mon. flush from area resurvey,
PK's 2.00' North + East.

Aug. 8, 1969
#5-80° ✓
D. Powell
R. Olson
R. Brien

